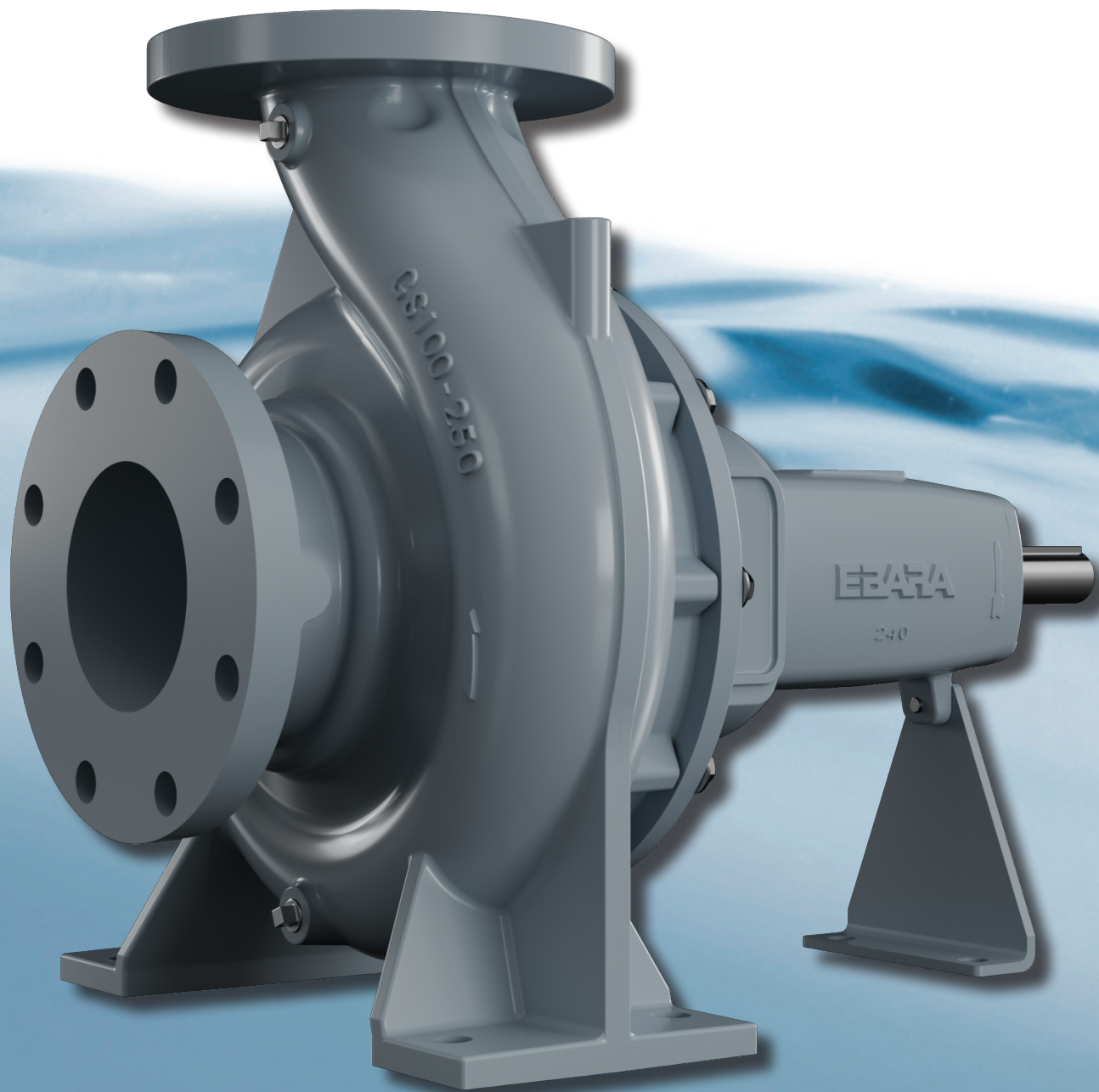
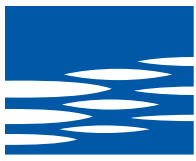


Model GSU

End Suction Centrifugal Pump

CENTRIFUGAL PUMPS





Model GSU

Features:

WEAR RINGS

To ensure a long service life and provide highest hydraulic efficiency in the market, GSU includes Stainless Steel replaceable wear rings as standard

ENERGY-SAVING DESIGN

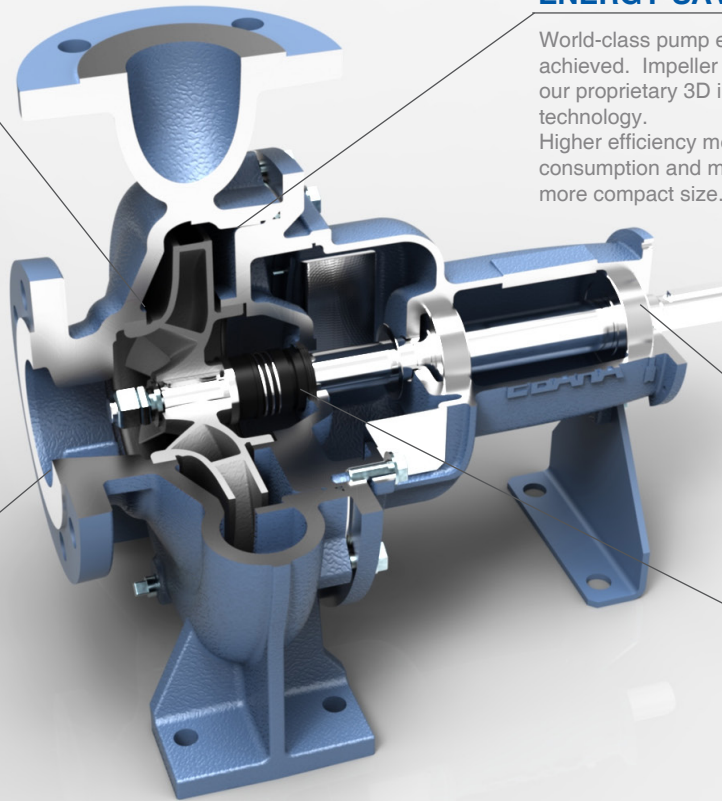
World-class pump efficiency achieved. Impeller designed using our proprietary 3D inverse design technology. Higher efficiency means lower energy consumption and motor output, and more compact size.

SIMPLE MAINTENANCE

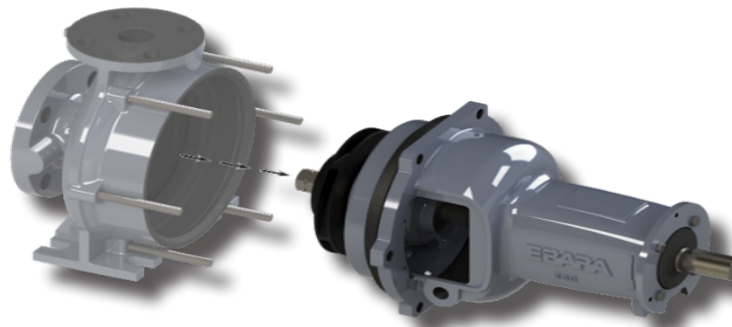
Shielded bearings eliminate the need for adding or exchanging lubricating oil. Environmentally friendly.

STANDARDS

Pump dimensions comply with EN733. Flanges are ANSI B16.1 allowing GSU pumps to be suitable for demanding applications



Back pull out structure enables disassembly and inspection without removal of suction and discharge piping.



Detailed performance and technical data available at www.pumpsebara.com/product/gsu/



Model GSU

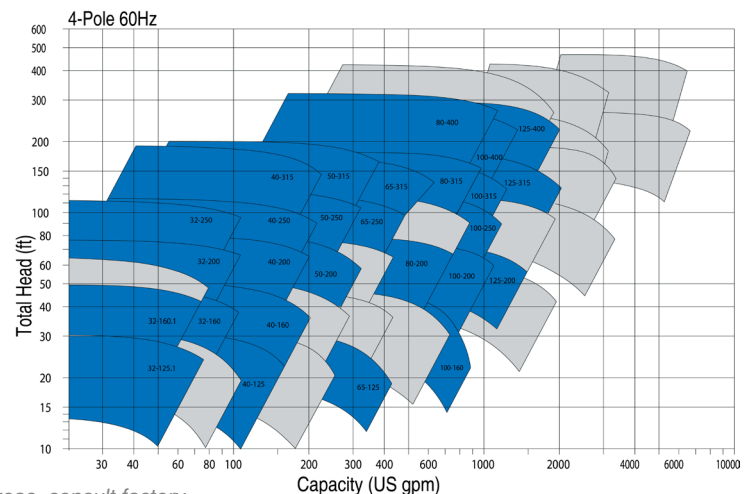
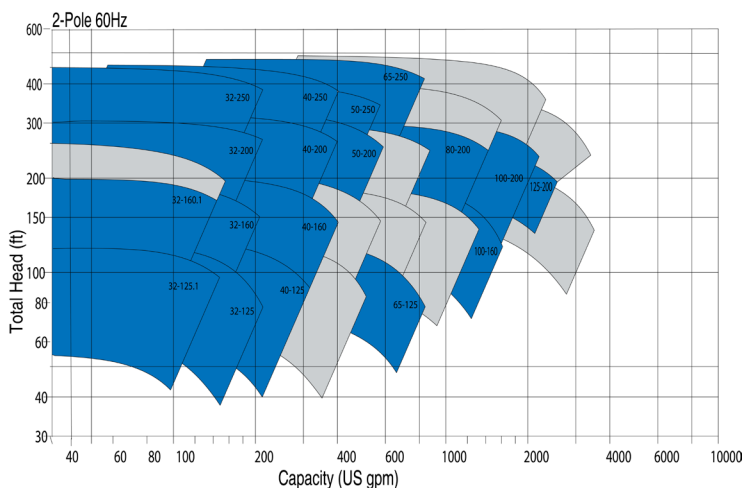
Standard Specifications:

	Standard*		Optional**
Frequency	60Hz		50HZ
Operational Speed	2 Pole	4 Pole	6 Pole
Phase	3 Phase		1 Phase
Voltage	230/460		575V, 190/380V
Enclosure	TEFC		ODP, Washdown, Explosion Proof, Other
Motor Standards	NEMA T/TS		
Power Range	0.5 hp to 150 hp		
Discharge Size	1 1/4" to 5"		
Capacity	Upt to 2,600 gpm (60Hz)		
Liquid Temperature	14°F to 212°F (-10°C to 100°C)		
Max Working Pressure	Up to 200psi (13.8Bar)		
Materials	Casing Cast Iron		
	Impeller: Cast Iron		
Pumps Standards	ANSI B16.1 - 125lb Flanges; EN733		
Rotation	Clockwise viewed from coupling end		

* Standard Accessories: Common base, coupling, & coupling guard.

** Optional Items: Consult factory for pricing and part number changes.

PERFORMANCE RANGE



Note: for the gray areas, consult factory



Applications

Water Supply • Drainage • Irrigation • Air Conditioning • Building Installations • Booster Pump
Condensate Circulations • Cooling Services • General Industries • Transfer Pump

Your Local EBARA representative: _____

ENGINEEREDfor**PERFORMANCE**

EBARA Pumps Americas Corporation

1651 Cedar Line Drive, Rock Hill, SC 29730
t (803) 327-5005 | f (803) 327-5097

www.pumpsebara.com

All specifications subject to change without notice.
©2018 EBARA Pumps Americas Corporation, All rights reserved. rev. 0823