
Submersible Wastewater Pump with Anti-Clog Technology

Model DKEU
Model DKEXU



QDC Data



EBARA

EBARA Pumps Americas Corporation

QDC Data

Specification**A. General**

The guide rail system design shall be such that the pump will be automatically connected to the discharge piping when lowered into place on the discharge connection. The pump shall be easily removable for inspection or service, requiring no bolts, nuts, or other fasteners to be disconnected or the need for personnel to enter the wet well.

B. Guide Rail system:

The design shall include two (2) 304SS schedule 40 guide rails sized to mount directly to the quick discharge connector, QDC, at the floor of the wet-well and to a guide rail bracket at the top of the wet-well below the hatch opening (refer to project drawings).

Intermediate guide brackets are recommended for rail lengths over 15 feet. Guide rails are not part of the pump package and shall be supplied by others.

The QDC shall be manufactured of cast iron, ASTM A48 Class 30. It shall be designed to adequately support the guide rails, discharge piping, and pumping unit under both static and dynamic loading conditions with support legs that are suitable for anchoring it to the wet-well floor.

The face of the inlet QDC flange shall be perpendicular to the floor of the wet-well.

The pump design shall include an integral self-aligning sliding bracket.

Sealing of the pumping unit to the QDC shall be accomplished by a single, linear, downward motion of the pump.

The entire weight of the pump unit shall be guided to and wedged tightly against the inlet flange of the QDC, making metal-to-metal contact with the pump discharge forming a seal without bolts, gaskets, or O-rings.

A stainless steel lifting chain of adequate length for removing and installing the pump unit is recommended. The chain shall have a round link with a 2-1/4" inside diameter every two feet. This link will allow for a sliding pinch bar through the link to pick the chain, more than once if necessary, at multiple intervals during pump removal and installation.



QDC Data

QDC Selection by Model

Pump model	QDC model	Pump model	QDC model
50DKEXU461.5	LME50A	50DKEU461.5	LM50A
50DKEXU461.5	LME50A	50DKEU461.5	LM50A
80DKEXU461.5	LME80A	80DKEU461.5	LM80A
80DKEXU461.5	LME80A	80DKEU461.5	LM80A
80DKEXU462.2	LME80A	80DKEU462.2	LM80A
80DKEXU462.2	LME80A	80DKEU462.2	LM80A
80DKEXU463.7	LME80A	80DKEU463.7	LM80A
80DKEXU463.7	LME80A	80DKEU463.7	LM80A
100DKEXU462.2	LLE100F	100DKEU462.2	LL100F
100DKEXU462.2	LLE100F	100DKEU462.2	LL100F
100DKEXU463.7	LLE100F	100DKEU463.7	LL100F
100DKEXU463.7	LLE100F	100DKEU463.7	LL100F
80DKEXU465.5	LME80A	80DKEU465.5	LM80A
80DKEXU467.5	LLE80A	80DKEU467.5	LL80A
80DKEXU4611	LLE80A	80DKEU4611	LL80A
100DKEXU465.5	LLE100F	100DKEU465.5	LL100F
100DKEXU465.5	LLE100F	100DKEBU465.5	LL100F
100DKEXU467.5	LLE100F	100DKEU467.5	LL100F
100DKEXU467.5	LLE100F	100DKEBU467.5	LL100F
100DKEXU4611	LLE100F	100DKEU4611	LL100F
100DKEXU4611	LLE100F	100DKEBU4611	LL100F
100DKEXU4615	LLE100F	100DKEU4615	LL100F
100DKEXU4615	LLE100F	100DKEBU4615	LL100F
100DKEXU4618	LLE100F	100DKEU4618	LL100F
100DKEXU4618	LLE100F	100DKEBU4618	LL100F
100DKEXU4622	LLE100F	100DKEU4622	LL100F
100DKEXU4622	LLE100F	100DKEBU4622	LL100F
150DKEXU467.5	LLE150F	150DKEU467.5	LL150F
150DKEXU4611	LLE150F	150DKEU4611	LL150F
150DKEXU4615	LLE150F	150DKEU4615	LL150F
150DKEXU4618	LLE150F	150DKEU4618	LL150F
150DKEXU4622	LLE150F	150DKEU4622	LL150F
200DKEXU4611	LLE250UF	200DKEU4611	LL250UF
200DKEXU4615	LLE250UF	200DKEU4615	LL250UF
200DKEXU4618	LLE250UF	200DKEU4618	LL250UF
200DKEXU4622	LLE250UF	200DKEU4622	LL250UF
250DKEXU4618	LLE300UF	250DKEU4618	LL300UF
250DKEXU4622	LLE300UF	250DKEU4622	LL300UF

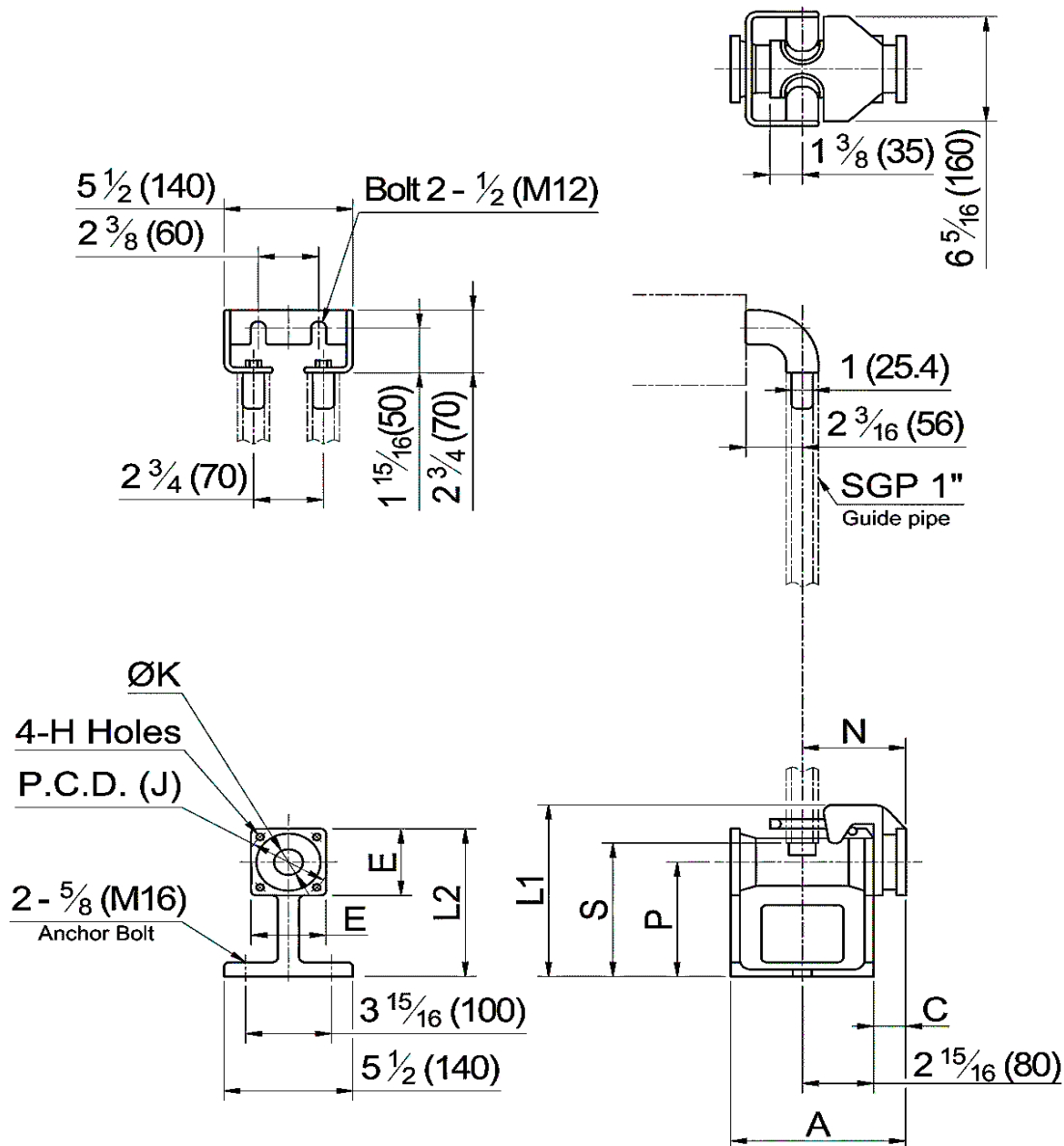


QDC Data

Model LM(E)50A, LM(E)80A

50DKE(X)U 2HP

80DKE(X)U 2 to 7.5HP



■ DIMENSION: (Inch)

■ WEIGHT: (lbs)

MODEL	A	C	E	H	J	K	L	L	N	P	S	Weight
LM(E)50A	7 11/16	1 9/16	4 5/16	1/2	4 3/4	1 15/16	8 1/4	7 1/2	4 1/2	5 5/16	6 1/2	25
LM(E)80A	8 7/16	1 15/16	5 1/2	9/16	6 1/8	3 1/8	10 5/8	9 5/8	4 15/16	6 7/8	9 1/16	38

■ DIMENSION: (mm)

■ WEIGHT: (kg)

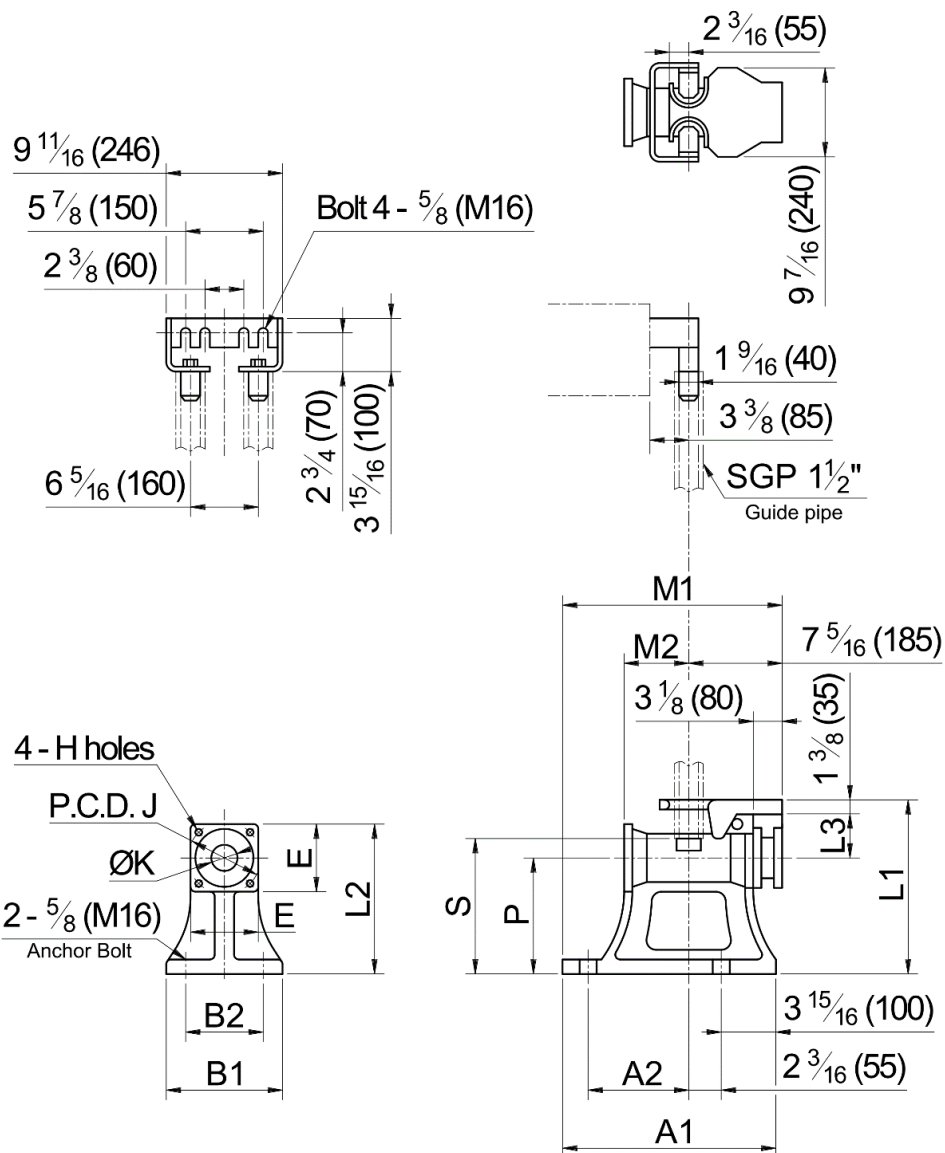
MODEL	A	C	E	H	J	K	L	L	N	P	S	Weight
LM(E)50A	195	40	110	12	120	50	210	190	115	135	165	11
LM(E)80A	215	50	140	15	155	80	270	245	125	175	230	17



QDC Data

Model LL(E)80A

80DKE(X)U 10 to 15HP



■ DIMENSION: (Inch)

■ WEIGHT: (lbs)

MODEL	A ₁	A ₂	B ₁	B ₂	E	H	J	K	L ₁	L ₂	L ₃	M ₁	M ₂	P	S	Weight
LL(E)80A	14 3/16	6 1/2	9 1/16	7 1/16	5 1/2	9/16	6 1/8	3 1/8	14 9/16	12 3/16	3 3/4	15 3/8	4 3/4	9 7/16	10 1/16	98

■ DIMENSION: (mm)

■ WEIGHT: (kg)

MODEL	A ₁	A ₂	B ₁	B ₂	E	H	J	K	L ₁	L ₂	L ₃	M ₁	M ₂	P	S	Weight
LL(E)80A	360	165	230	180	140	15	155	80	370	310	95	390	120	240	255	44

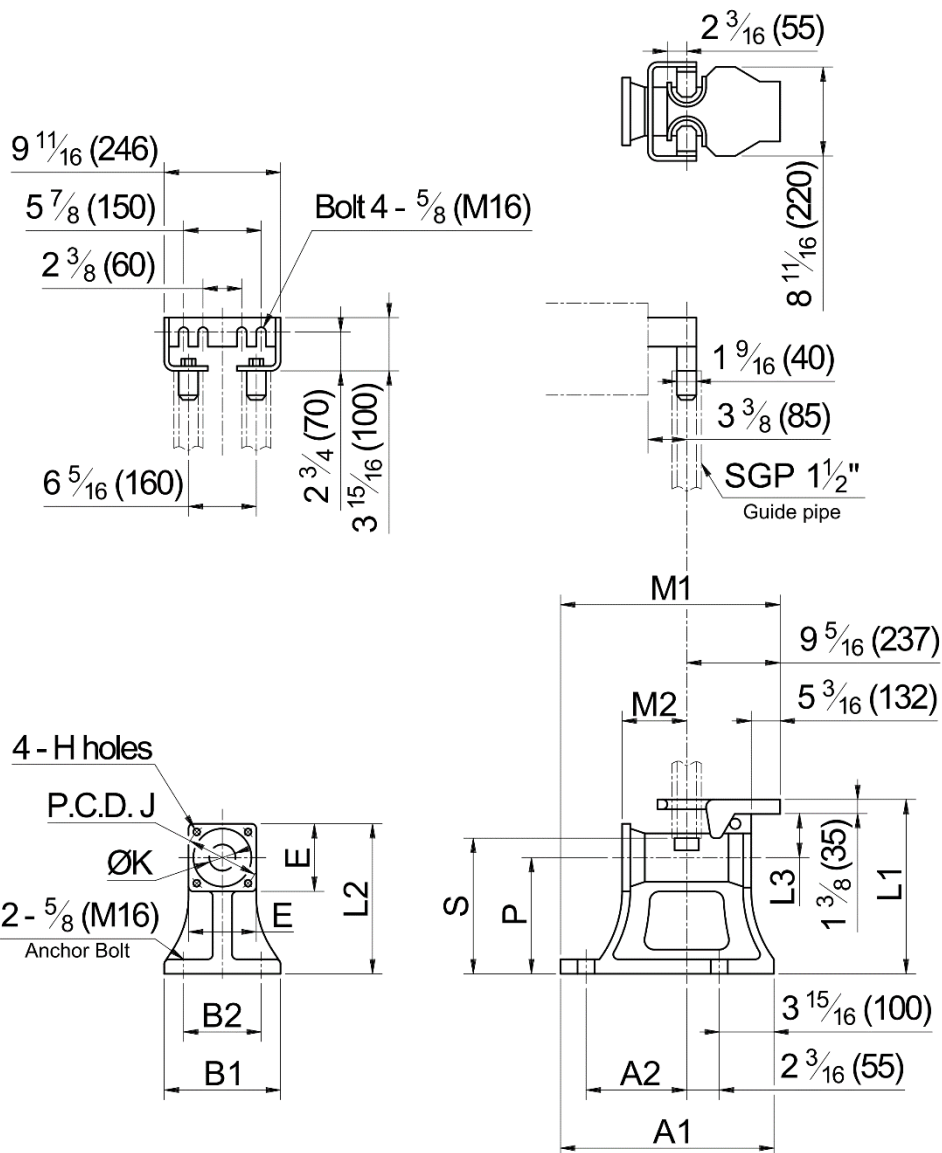


QDC Data

Model LL(E)100F

100DKE(X)U 3 to 30HP

100DKEB(X)U 7.5 to 30HP



■ DIMENSION: (Inch)

■ WEIGHT: (lbs)

MODEL	A ₁	A ₂	B ₁	B ₂	E	H	J	K	L ₁	L ₂	L ₃	M ₁	M ₂	P	S	Weight
LL(E)100F	14 3/16	6 1/2	9 1/16	7 1/16	6 5/16	3/4	6 7/8	3 15/16	14 15/16	12 5/8	4 1/8	17 3/8	4 1/8	9 7/16	10 7/16	102

■ DIMENSION: (mm)

■ WEIGHT: (kg)

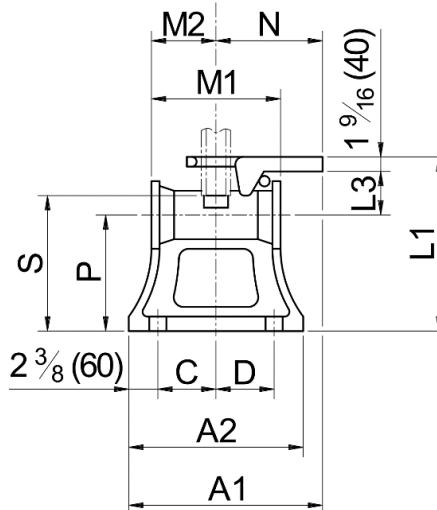
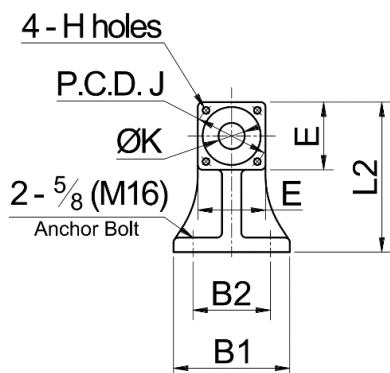
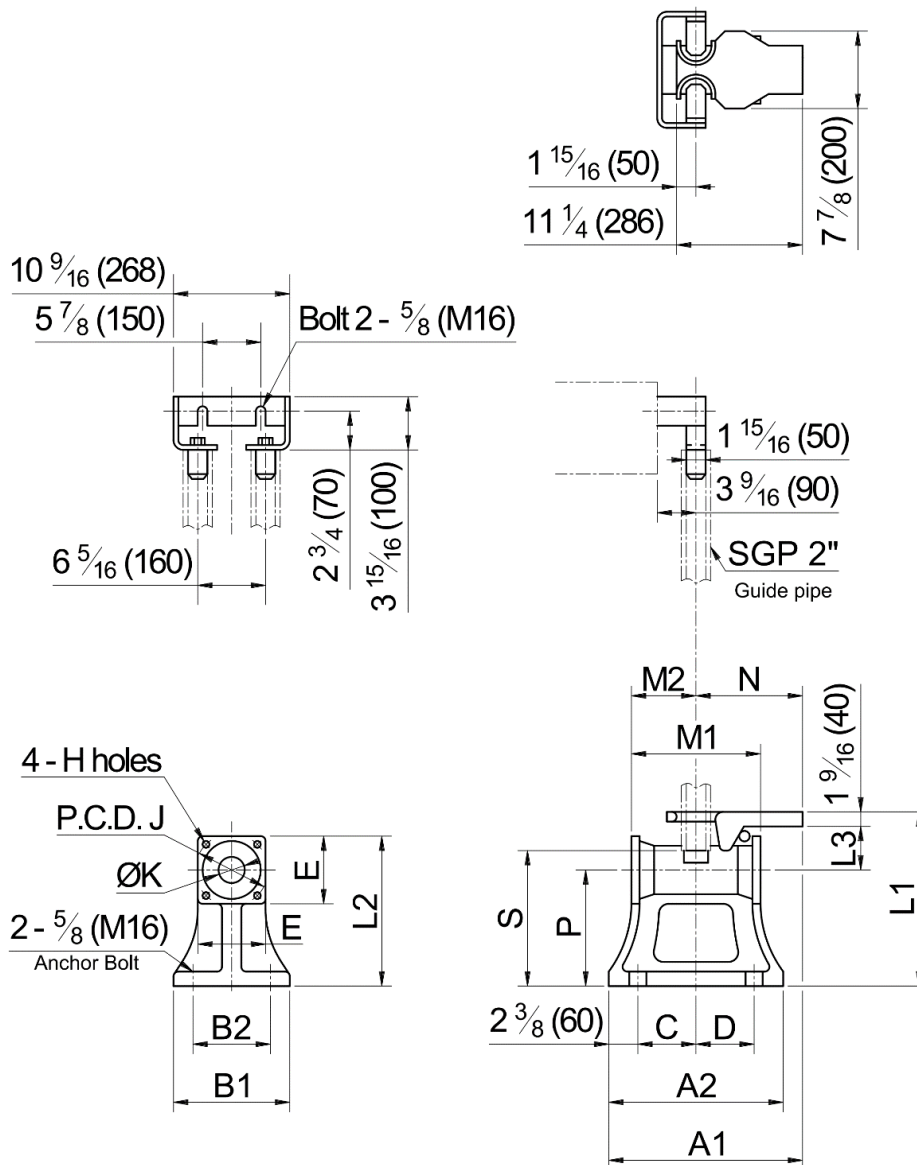
MODEL	A ₁	A ₂	B ₁	B ₂	E	H	J	K	L ₁	L ₂	L ₃	M ₁	M ₂	P	S	Weight
LL(E)100F	360	165	230	180	160	19	175	100	380	320	105	442	105	240	265	46



QDC Data

Model LL(E)150F

150DKE(X) 10 to 30HP



■ DIMENSION: (Inch)

■ WEIGHT: (lbs)

MODEL	A ₁	A ₂	B ₁	B ₂	C	D	E	J	K	L ₁	L ₂	L ₃	M ₁	M ₂	N	P	S	Weight
LL(E)150F	20 1/2	8 1/4	13 3/4	11 13/16	8 11/16	6 11/16	8 11/16	9 13/16	5 7/8	18 9/16	16 15/16	4 7/16	14 3/16	8 1/16	2 15/16	12 5/8	15 15/16	177

■ DIMENSION: (mm)

■ WEIGHT: (kg)

MODEL	A ₁	A ₂	B ₁	B ₂	C	D	E	J	K	L ₁	L ₂	L ₃	M ₁	M ₂	N	P	S	Weight
LL(E)150F	520	210	350	300	220	170	220	250	150	472	430	112	360	205	75	320	405	80

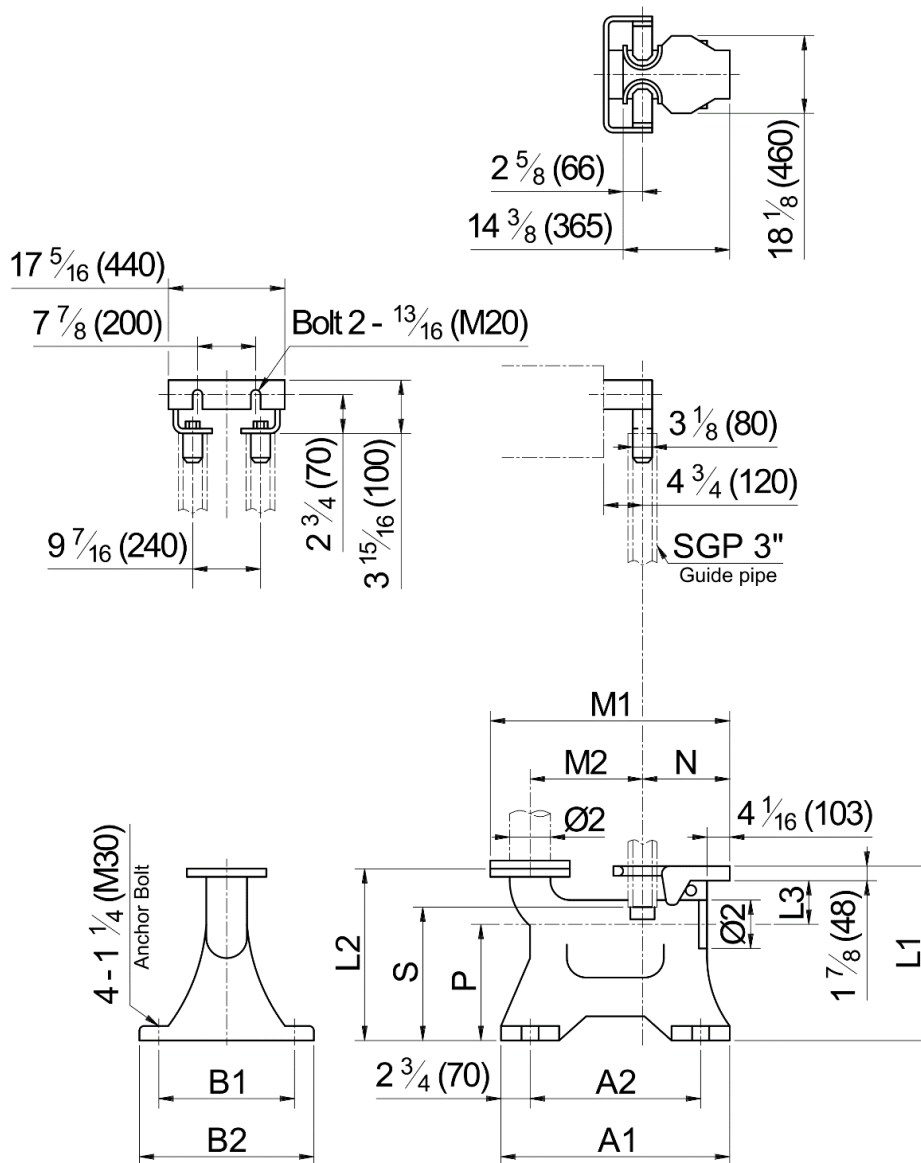


QDC Data

Model LL(E)250UF, LL(E)300UF

200DKE(X)U 15 to 30HP

250DKE(X)U 25 to 30HP



■ DIMENSION: (Inch)

■ WEIGHT: (lbs)

MODEL	Ø ₁	Ø ₂	A ₁	A ₂	B ₁	B ₂	L ₁	L ₂	L ₃	M ₁	M ₂	N	P	S	Weight
LL(E)250UF	8	10	31 1/8	25 9/16	19 11/16	22 1/16	21 9/16	27 9/16	5 7/8	36 15/16	17 1/8	11 3/4	13 3/4	17 5/16	331
LL(E)300UF	10	12	32 5/16	26 3/4	22 13/16	25 3/16	25 11/16	31 1/2	6 7/8	39	18 5/16	11 3/4	16 15/16	17 11/16	441

■ DIMENSION: (mm)

■ WEIGHT: (kg)

MODEL	Ø ₁	Ø ₂	A ₁	A ₂	B ₁	B ₂	L ₁	L ₂	L ₃	M ₁	M ₂	N	P	S	Weight
LL(E)250UF	200	250	790	650	500	560	548	700	150	938	435	298	350	440	150
LL(E)300UF	250	300	820	680	580	640	653	800	175	991	465	298	430	450	200

