

# **EBARA Global Service Replacement Service Leaflet**



# EBARA Pump Replacement Service

Pumps in plants are continuously operated until periodical inspections. It is inevitable that not only pumps but also their driver and other peripheral equipment become subject to time-related deterioration/degradation. EBARA Pump Replacement Service provides remedies to such aging problems of pump systems. Our accumulated diagnostic and preventive engineering expertise and know-how are fully made use of in this service, earning us the title of a reliable provider of services for maximizing the life of pumps.



## 1. EBARA Pump Replacement Service

Time-related deterioration/degradation of pumps can cause operational inconveniences. Changes in operational conditions at a plant can lead to changes in pump specifications under which expected performances and functions are unachievable.

### 1) Replacing pump

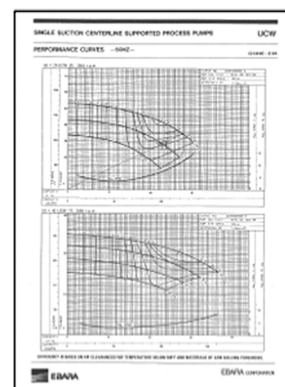
If it is determined that a pump showing time-related deterioration/degradation needs to be replaced, a new pump with the same specifications will be manufactured and provided.

### 2) Optimizing pump performance to match plant operational conditions

When a need arises to optimize pump performance to match plant operational conditions, impellers and casings with matching specified points will be manufactured. Improvement in sealing performance and optimization of pump material will also be done.

### 3) Applying trouble preventive measures

Pump parts featuring preventive measures against recurring trouble, as well as those featuring preventive maintenance will be provided.



Perform Optimization

## 2. Non-EBARA Pump Replacement Service

An EBARA replacement pump which matches customer requirements and specifications will be chosen using the Pump Selection Tool and swiftly delivered against non-EBARA pumps. EBARA replacement parts which feature optimized performance and functions are also available.

	Pump Type	Stage	Pump Model	IR Classification	Oil & Gas Production	Oil & Gas Processing
Horizontal	Radial	Single	EFW	OH1	6	
	Radial	Single	UCW	OH2	7	
	Radial	Single	UCS	OH2	7	
	Axial	Single	GP	BB1	8	
	Axial	Two	SPL	BB1	8	
	Radial	Single	KS	BB2	9	
	Radial	Two	RZ, RZD	BB2	9	
	Axial	Multi	SPR, SPRB	BB3	10	
	Axial	Multi	SP, SPO	BB3	10	
	Radial	Multi	DCS, ECD	BB5	11	
Vertical	Radial	Multi	HSB, HDB	BB5	11	
	Axial	Single	CN	12		
	Radial	Multi	MSS, MSSH	12		
	Radial	Multi	SS, SSD	13		
	Radial	Multi	SOP	13		
	In-Line	LPWM	OH4	14		
	In-Line	LPW	OH5	14		
	Wet Pit	YY, VZ	V51	15		
	Wet Pit	YS	V53	15		
	Sump	VPM	V54	16		
Double Casing	Sump	VPS	V54	16		
	Sump	VPS	V54	16		
	Sump	VPS	V54	16		
	Sump	VPS	V54	16		
	Sump	VPS	V54	16		
	Sump	VPS	V54	16		
	Sump	VPS	V54	16		
	Sump	VPS	V54	16		
	Sump	VPS	V54	16		
	Sump	VPS	V54	16		
Submerged Motor	Double Casing	VPCH	V56	18		
	Double Casing	VPCH	V56	18		
	Double Casing	VPCH	V56	18		
	Double Casing	VPCH	V56	18		
	Double Casing	VPCH	V56	18		
	Double Casing	VPCH	V56	18		
	Double Casing	VPCH	V56	18		
	Double Casing	VPCH	V56	18		
	Double Casing	VPCH	V56	18		
	Double Casing	VPCH	V56	18		

Pump Selection Guide

### 3. Pump and Aux. Unit Modification Service

A pump unit, comprising a pump, driver and water injection system, etc. can be subject to inconveniences due to time-related deterioration/degradation. EBARA provides pump units for replacement, parts featuring modified performance and function, as well as Aux. units.

#### 1) Replacing a pump unit

Conditions of an EBARA pump are evaluated based on changes in data obtained from periodical inspection and operational monitoring.

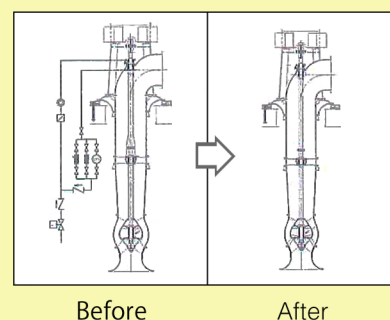
Everything from replacement parts and optimal pump units are determined from the evaluation results and provided.

#### 2) Optimization and modification of a pump unit

Changes in operational conditions at a plant can cause a drop in pump performances and functional issues.

Optimization of pump units is carried out to enable superior performance efficiencies. If energy conservation is desired, we are ready to work out optimal plans using our accumulated experience and expertise in this field.

Improvement of Aux. System



### 4. Pump and Aux. Unit Engineering Service

Operational conditions of a pump and its aux. unit will be diagnosed during periodical inspection and an evaluation on the operability will be provided.

Advice will also be provided on the risk of malfunctions and such, made out from operational monitoring data.

#### 1) Evaluation on pump and aux. unit conditions

Operational conditions of a pump and its aux. unit will be diagnosed, advice provided regarding repairs and modifications.

#### 2) Assisting in preparatory work for pump replacement

The arrangement of related existing equipment, devices and such is not without restrictions at the time of pump replacement.

#### 3) Assisting in engineering work and procedures

Assistance is provided for engineering work and procedures for repairs, modifications and replacement.

### Contact & Communicate

#### 1) Contact

EBARA Pump Replacement Service is organized by EBARA Japan and Local Service Offices. EBARA Corporation/ Fluid Machinery & Systems Company/ Custom Pump Div.

[www.ebara.co.jp](http://www.ebara.co.jp)

#### 2) Communicate

Users can communicate by Email, Telephone, Fax, and Directly In-person with our Service Staff.

Please feel free to tell us your specific needs via our “Kind and Speedy” Service.





## EBARA CORPORATION

11-1, Haneda Asahi-cho, Ohta-ku,  
Tokyo 144-8510, Japan  
TEL (03)3743-6111 FAX (03)5736-3100  
<http://www.ebara.co.jp>

contact