

PM CANNED MOTOR PUMP MODEL SSPD

Typical application

- ◆ The goods have advantages to incorporate an apparatus for OEM machines due to compact and lightweight [Pharmaceutical, Healthcare, Battery production, Semiconductor manufacturing process]

Please feel free to contact us for the best offer.

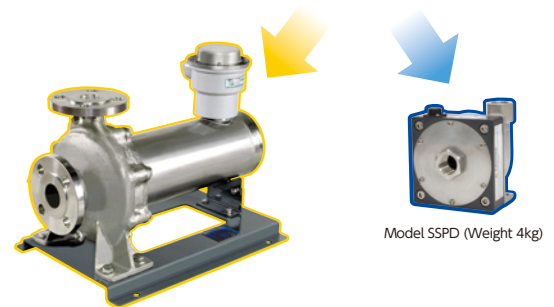
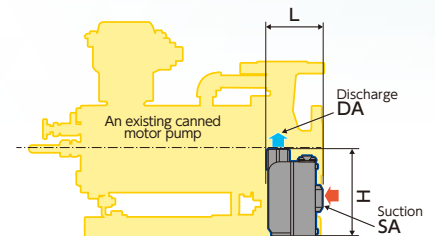
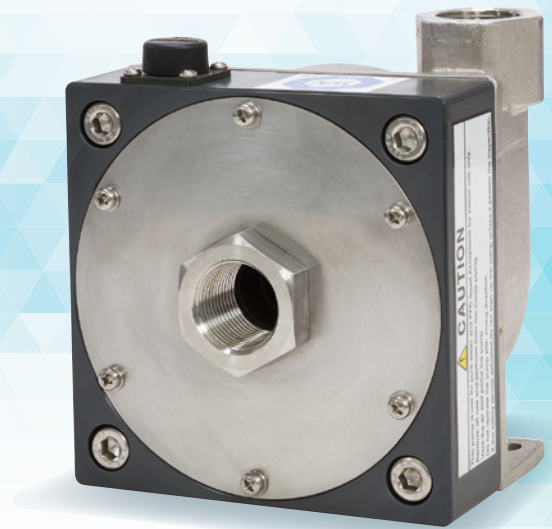
Features

- ◆ Ultimate compact size : Downsizing by 97% compared with our existing canned motor pumps (Model SXA)
- ◆ Ultimate lightweight : Downsizing by 93% compared with our existing canned motor pumps (Model SXA)
- ◆ Leak free/sealless
- ◆ High Efficiency
Save power consumption by 50% to 60% by improved motor efficiency.
- ◆ Motor loss minimization
 - (1) Built-in Permanent Magnet Motor
 - (2) Reduction in motor loss by heat resistant resin in can
- ◆ Variable speed control with standard inverters
- ◆ Easy to handle with export due to omitting induction motor regulations.
- ◆ NRTL certified

Dimensional Drawing

unit : mm

Model	kW	SA	DA	L	W	H	Weight
SSPD	1.1	Rc3/4	Rc3/4	89	120	140	4kg



Model SXA (Existing model/Weight 52kg)

Model SSPD (Weight 4kg)

Specification

Model	Motor output	Liquid/Temperature	Duty Points	Weight	Noise
20SSPD01.1	1.1kW	PFC/-20~90°C*1	0.5MPa x 30L/min*2	4kg	56dB

*1 The performance depends on the temperature of liquid. *2 The performance is based on PFC (Fluorinert FC-3283 by 3M, or Galden HT-170 by Solvay etc. at 25 °C)
* Fluorinert is trademark by 3M and Galden is by Solvay respectively.